

# DESIGN GUIDELINES SERVICES

1

SACRAMENTO, CALIFORNIA



*Typical raised cottage*



*A commercial storefront in the Spanish Colonial Revival style that was popular in 1915.*



*The guidelines include ways to protect and maintain significant stylistic features, such as these windows, gable spindlework and scroll brackets.*

## SERVICES:

- » Guidelines for treatment of historic properties
- » Guidelines for new construction in historic districts
- » Public outreach and training

## CLIENT:

City of Sacramento

## DATE:

2005

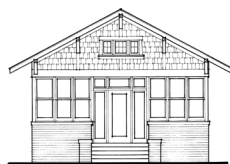
## Historic Districts and Landmarks Design and Development Standards

Sacramento's location, within a great valley and at the confluence of two rivers, shaped its early and modern settlements. Its center city neighborhoods retain buildings that convey its history and enhance the quality of life for its residents. Many of these areas are designated as historic districts.

The City of Sacramento sought to establish a consistent set of design standards/guidelines, and especially those addressing new construction and additions within residential and mixed-use historic districts. Winter & Company assisted the community in developing a set of general guidelines for preservation and also created a system of more detailed chapters for individual neighborhoods. The first four model neighborhoods are Boulevard Park, Capitol Avenue, South Side, and Washington.

The document provides standards for historic properties, new design, development and infill that will be applicable to Sacramento's designated historic districts as well as to historic properties located outside of historic districts. In addition, general guidelines/standards for preservation are provided which may also apply to individual historic properties throughout the city.

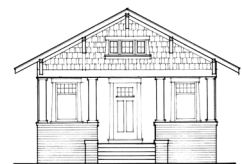
The City's preservation staff and Design Review & Preservation Board members, neighborhood associations, residents, and property and business owners within historic neighborhoods participated in the project.



*Existing Condition*



*Preferred approach, when historical documentation is available.*



*Acceptable Approach, when historical documentation is not available.*



Winter & Company

[www.winterandcompany.net](http://www.winterandcompany.net)