

DESIGN GUIDELINES SERVICES

1

BRATTLEBORO, VERMONT



Downtown Brattleboro boasts one of the greatest collections of historic commercial buildings in New England.

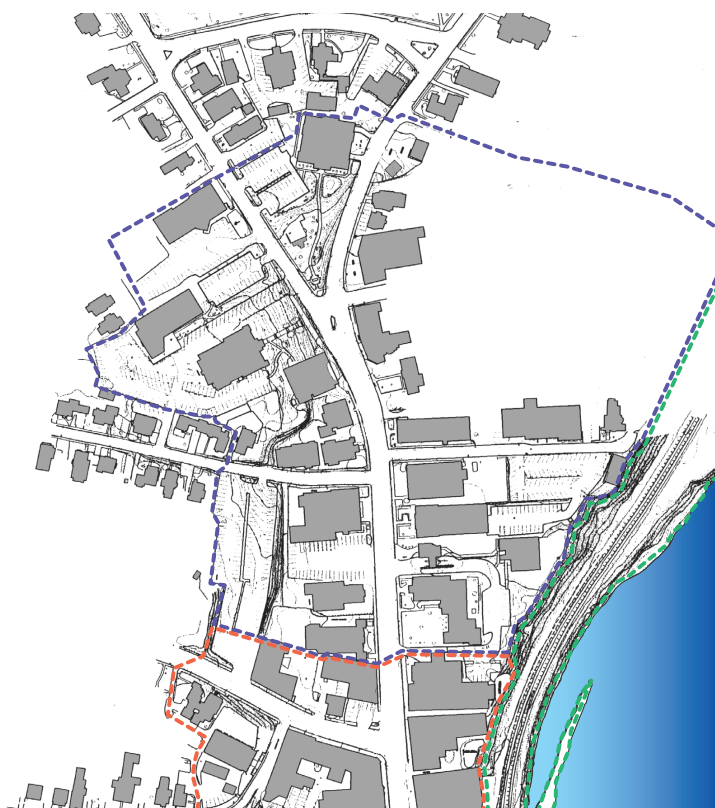


Historic downtown Brattleboro remains the center of the community.

Downtown Guidelines

The Connecticut River port city of Brattleboro, Vermont boasts one of the greatest collections of historic commercial buildings in New England. The community has a strong tradition of preservation, but citizens were becoming concerned that alternations and new development could adversely affect the historic fabric of downtown Brattleboro.

Winter & Company worked with Brattleboro's downtown association to develop design guidelines to address historic building features and promote compatible new construction. The guidelines are tailored to downtown's unique subareas, including the commercial core, where storefronts align at the sidewalk edge, and outlying transitional areas, where buildings are set back from the street with green space in front. Winter & Company worked closely with the LPC, City staff, stakeholders and the general public to develop the updated guidelines. The process included interactive workshops with illustrated design review activities and open houses to provide opportunities to learn about and comment on the draft guidelines.



The design guidelines are tailored to downtown Brattleboro's unique subareas.



Winter & Company

www.winterandcompany.net

DESIGN GUIDELINES SERVICES

2

BRATTLEBORO, VERMONT

Topics addressed by the Design Guidelines include:

- » A summary of key elements of typical historic building styles
- » Strategies for treatment of historic building features
- » Principles for compatible new construction
- » Strategies for addressing the rear and river-edge of commercial and industrial buildings, including balconies and decks



The ornate 1871 Brooks House is the largest commercial structure in downtown Brattleboro.



The design guidelines address the relationship of the rear of historic commercial and industrial buildings to Whetstone Brook and the Connecticut River.

SERVICES:

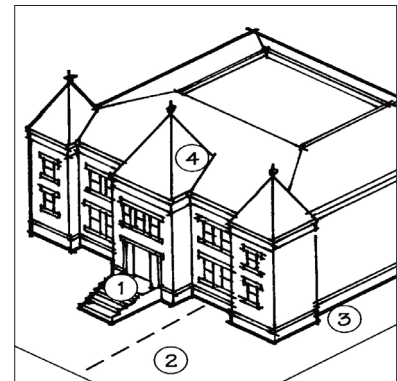
- » Design guidelines for alterations to historic commercial buildings
- » Design guidelines for new development
- » Design guidelines for distinct subareas

CLIENT:

Building a Better Brattleboro

DATE:

2001



A sketch illustrates the typical components of a historic institutional building in downtown Brattleboro.



Winter & Company

www.winterandcompany.net