

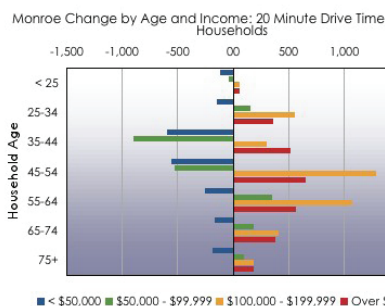
# URBAN PLANNING SERVICES

1

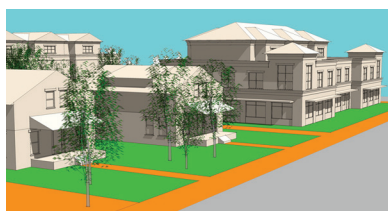
## MONROE, WASHINGTON



*The Main Street Corridor*



*Market opportunities for the corridor*



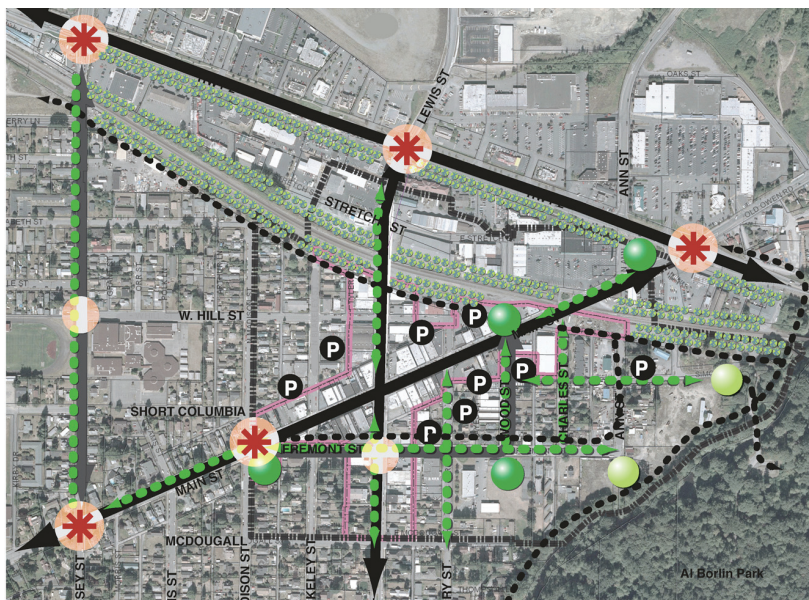
*Illustrations for compatible infill adjacent to residential properties*



### Downtown Master Plan and Design Guidelines

The city of Monroe, located 30 miles northeast of Seattle, is situated in the Skykomish River Valley surrounded by forested open space. With over 16,000 residents the city includes a historic downtown as well as established residential neighborhoods. It lies along Highway 522, which links it to employment centers for Microsoft and other high tech companies in the metro area. The Main Street Corridor slices through the heart of the old town area.

The City sought to revitalize the corridor by capitalizing on the drive-through traffic while also building stronger neighborhoods that flank it. The plan includes an analysis of market opportunities, circulation and parking strategies and streetscape enhancements. It also identifies a series of opportunity sites for rehabilitation and others for new mixed-use construction that will support the corridor.



*The circulation and parking framework identifies key links to the neighborhoods and locates shared parking opportunities.*



Winter & Company

[www.winterandcompany.net](http://www.winterandcompany.net)

# URBAN PLANNING SERVICES

2

## MONROE, WASHINGTON

An active outreach process engaged residents in a series of hands-on workshops that generated key concepts for the plan.

A series of street sections define methods of calming traffic and enhancing the pedestrian environment. Improving connections to adjacent neighborhoods are also key concepts.

The Downtown Design Guidelines focus appropriate rehabilitation of existing buildings and also provide principles for compatible new construction.

### SERVICES:

- » Downtown Master Plan
- » Downtown Design Guidelines

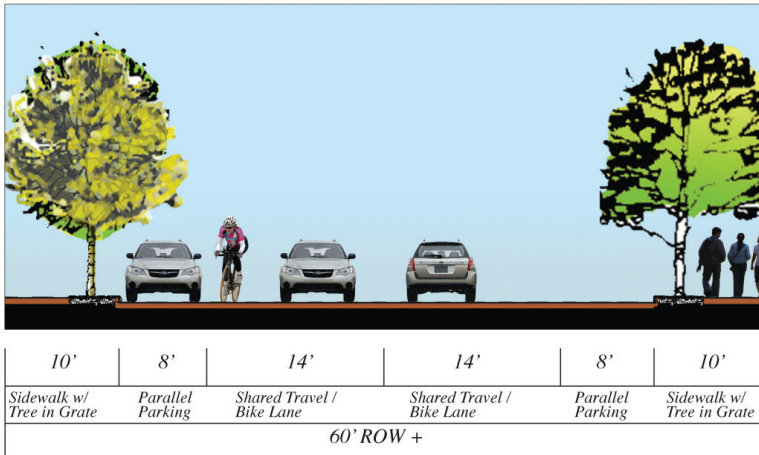
### CLIENT:

Kate Galloway  
Senior Planner  
City of Monroe

### DATE:

2007-2008

*Woods Street Proposed Alternative B*



Alternative street sections were designed to accommodate automobiles, pedestrians, and, in certain locations, bicycles.



The Plan includes recommendations for streetscape elements including signs, planting pots, benches, hanging baskets, and light fixtures.



Studies in massing focus on transitions in scale to residential and mixed use areas.



Streetscape recommendations build upon existing improvements.



Winter & Company

[www.winterandcompany.net](http://www.winterandcompany.net)