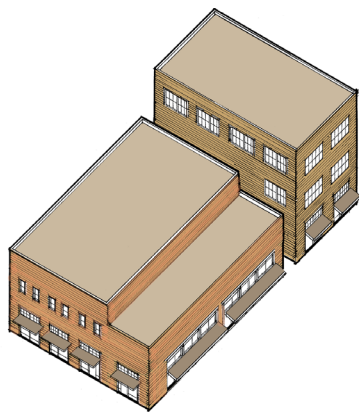


# DESIGN GUIDELINES SERVICES

1

TWIN FALLS, IDAHO



*Warehouse model*

## SERVICES:

- » Analysis of different design contexts
- » Design guidelines

## CLIENT:

Kelly Weeks  
Planning & Zoning Department  
City of Twin Falls

## DATE:

2011

## Design Guidelines for the Warehouse Historic District

Twin Falls is named for the nearby Snake River waterfall of the same name. The Warehouse Historic District, one of the oldest districts in town, is rich with industrial and utilitarian buildings which represent the highest concentration of buildings associated with the processing, storing and transporting of wholesale products, both agricultural and manufactured. These structures serve as a link to the city's heritage and are enjoyed by residents, business owners and visitors alike. While the Warehouse Historic District itself symbolizes the past, it also offers opportunities for a vibrant future.

Winter & Company developed design guidelines for the Warehouse Historic District to ensure that the district's integrity is maintained, while also supporting its economic and cultural vitality. The guidelines assure that improvements in the district are respectful of, and responsive to, its historic significance. They address a range of improvement projects within the district including: rehabilitation of historic buildings, improvements to existing non-historic structures, construction of compatible new infill structures and site improvements. The guidelines assist in making determinations of appropriateness for proposed projects as well as providing education and advice to property owners in planning their projects.



*Renovated State Paper Company Warehouse*



Winter & Company

[www.winterandcompany.net](http://www.winterandcompany.net)