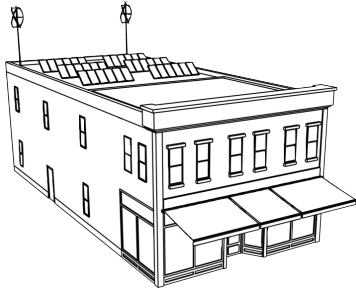


DESIGN GUIDELINES SERVICES

1

LITTLETON, COLORADO



Green principles for a commercial building



SERVICES:

- » Public Outreach
- » Design guidelines

CLIENT:

Andrea Mimnaugh
Senior Planner
City of Littleton

DATE:

2010 - 2011

Rehabilitation Design Guidelines

Littleton, a suburb ten miles south of Denver, has a unique identity shaped in part by its downtown historic buildings. These buildings are a source of civic pride regarding the past and the future, and provide residents with a sense of community. The City sought to protect these historic resources by establishing new guidelines for the rehabilitation of historic buildings to supplement existing general design guidelines for the downtown.

Winter & Company developed this document to provide essential guidance to help make the preservation program as understandable and predictable as possible, as well as easy to administer. The guidelines include photographs of Littleton as well as sketches and examples of appropriate design solutions in comparable communities.

A substantial amount of preliminary analysis was done through a series of community workshops named True Grit. Participants identified topics needing to be addressed in the guidelines.

Some topics addressed include:

- » General rehabilitation principles for downtown historic buildings
- » Principles of sustainability in preservation projects
- » How to assess the key features of a historic downtown building
- » How to develop an approach for rehabilitation of commercial historic buildings with differing degrees of intensity



Winter & Company

www.winterandcompany.net