

Winter & Company

Urban Design • Historic Preservation • Design Review



Residential design guidelines for Laguna Beach, CA encourage building that reflects the established relationships of siting and scale that is seen in the neighborhood.



An opportunity site in a transition zone in Monterey, CA provides a mixed use cluster. Mature cypress trees were preserved, corners were anchored and pedestrian-friendly facades were incorporated.



Clerc Hall at Gallaudet University in Washington, D.C. is a deaf student housing renovation project being undertaken by Winter & Company's Special Needs Studio.

Enhancing community livability, protecting cultural resources and providing delight in the community experience — these are the focus of design, preservation and planning services at Winter & Company — often in resort communities and other towns with special character.

Winter & Company is a planning and urban design firm that consults nationwide to public agencies, downtown improvement committees and private property owners. Collaboration with regional planning and design professionals is a specialty. Services include urban design plans, neighborhood conservation strategies, cultural facility feasibility studies and design guidelines. Projects span more than 150 communities in 48 states and Canada.

Company personnel are frequently featured speakers at conferences and conventions, including the National Trust for Historic Preservation, the Western Planners Association, the American Planning Association and statewide preservation organizations.

In addition, the Special Needs Studio is a pioneer in facility planning and design for the Deaf and Hard of Hearing and consults across the nation with schools, community organizations and developers who are engaged in providing facilities designed for the Deaf Community.

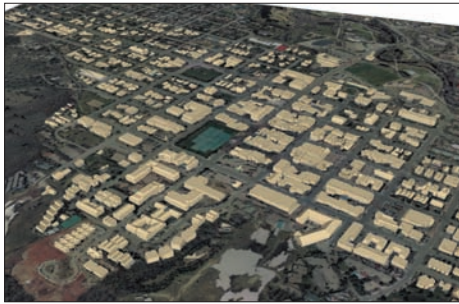
Winter & Company uses a process that actively engages stakeholders, residents and property owners in creative ways of team-building and problem solving. Community workshops, open houses, and stakeholder interviews are planned to be lively, informative and constructive.



Form-based design standards and guidelines help ensure that taller, higher density development along the Galveston, TX seawall is compatible with adjacent neighborhoods and provides benefits to the overall community.



Neighbors in Greenville, SC define key features of their historic district.



Computer modeling of cities such as Aspen, CO illustrates the 3 dimensional form of the city. Additionally they provide a base to explore potential development options, such as the building below.



3-D development scenarios are used to analyze the affects of proposed standards and guidelines as well as illustrate the final review criteria.



Streetscape improvements in the City of Canton, OH show how a Master Plan can come to life.

Winter & Company ...

Services:

Community Character Management Systems

- Conservation District and Neighborhood Conservation Plans
- Design and Historic Preservation Guidelines
- Design Review Systems
- Preservation Plans
- Neighborhood Plans

Cultural & Educational Facility Planning

- School facility plans
- Performing arts site selection
- Feasibility testing

Form-based design codes

- Neighborhood-based design regulations
- Modeling of alternative development scenarios
- Illustrating community design principles and standards
- Testing draft standards and codes
- Context-sensitive design standards and guidelines
- Development standards for commercial corridors

Historic Resource Planning & Management

- Building rehabilitation strategies
- Historic building master plans
- Adaptive reuse feasibility studies
- Historic building condition assessments
- Heritage Tourism and Historic Survey Strategies
- Commission training

Public Participation & Community Outreach

- Hands-on participatory planning workshops
- Stakeholder group facilitation
- Design compatibility surveys & workshops
- Community-based charrettes and Visioning

Rural Conservation Planning & Design

- Rural heritage-based design guidelines
- Land conservation strategies
- Historic farm preservation studies

Urban Design

- Downtown and Neighborhood Plans
- Preservation Plans
- Streetscape Design and Wayfinding systems
- Corridor plans and guidelines
- Development Studies for Opportunity Sites
- River corridor plans & development standards

Special Needs Studio

- Facility Planning and Programming
- Design Assistance and Facility Assessments
- Technical Specifications