

Brickelltown Streetscape Project Truckee, California



The Town of Truckee has embarked on a streetscape planning effort for areas in the historic downtown that will develop design guidelines for pedestrian and street corridors, landscaping, lighting, amenities, and parking. The project takes into consideration the historic context, urban design policies and economic development benefits. A key component of this project is to engage the community, including property owners, residents and businesses, in a productive discussion about the ways in which street improvements can enhance the quality of life and stimulate the economy of the community. This will ultimately lead to the construction of streetscape improvements for the project area.

Services:

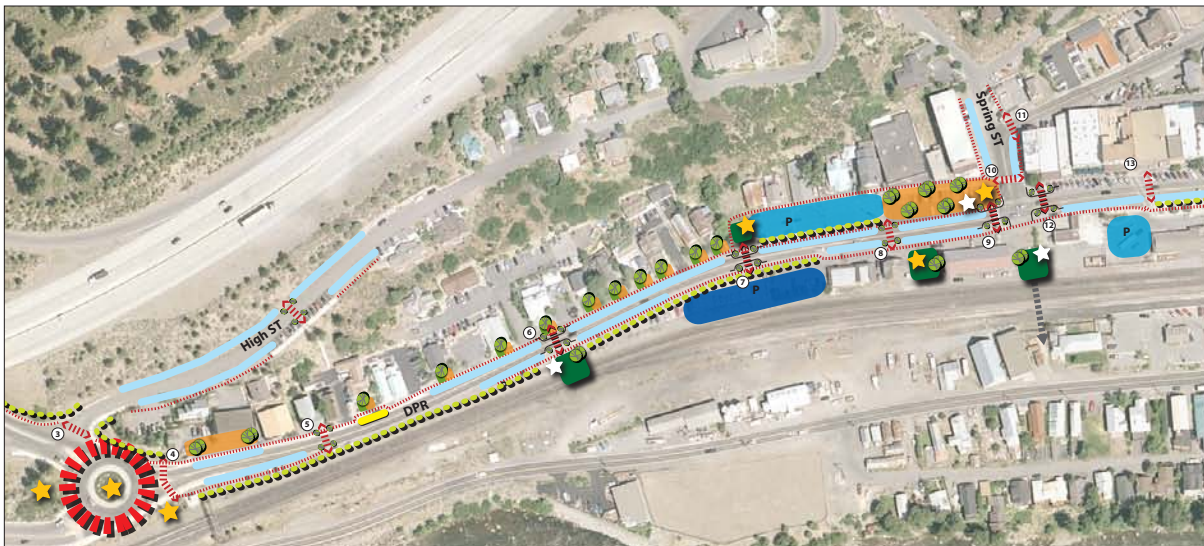
- Urban design
- Public process
- Alternate scenario modeling

Client:

Jenna Endres,
Associate Planner

Date: 2009 - 2010

Having worked on the Truckee Preservation Plan, Winter and Company is now teamed with ESE engineering firm in developing a successful streetscape plan. The firm conducted a series of public workshops including small neighborhood and individual discussions as well as community-wide meetings. Council will vote on the report findings in early 2010.



Legend

- | | | | | | |
|-------------------|----------------------|-----------------------|---------------------------|-------------------|--------------------------------|
| Primary Gateway | Crosswalk | Sidewalk | Pocket Park | On-street Parking | Landscape Buffer/Improvement |
| Secondary Gateway | Enhanced crosswalk | Pedestrian Connection | Small Courtyard/Frontyard | Mixed-Use Parking | Historic/Interpretive Marker |
| | Crosswalk w/bulb-out | Loading Zone | Community Plaza | Festival Lot | Streetscape Feature/Public Art |

URBAN DESIGN SERVICES

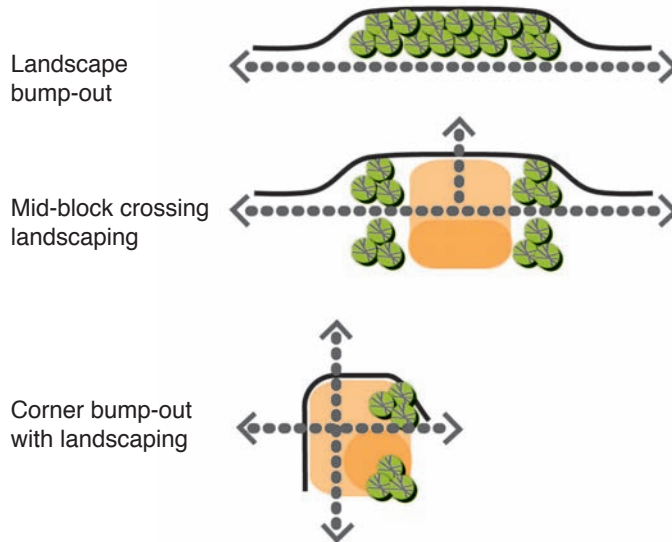
Brickelltown Streetscape Project Truckee, California (continued)



The streetscape along the Historic Brickelltown District will be enhanced with continuous sidewalks, crosswalks, furnishings and lighting to promote a pedestrian-friendly environment. In some locations the sidewalks are too narrow and not continuous.



Parking areas in front of several business are envisioned to become active pedestrian spaces. The existing parking spaces for this business will be located on-street in a new angled parking configuration. This will allow for a new outdoor dining area and landscaping.



Guidelines were developed to address the configuration of bump-out types along the Brickelltown commercial frontage. The diagrams above were created to help visualize the different types that could be used.