

Virginia Rehabilitation Center for the Blind and Vision Impaired Richmond, Virginia

Services:

- Facility Design/Programming
- Schematic Design
- Design Development
- Construction Documents
- Specifications

Client:

Dr. Dick Fisher
Department for the Blind and
Vision Impaired
397 Azalea Avenue
Richmond, Virginia 23227-3623
1-800-622-2155

Date: Current

Construction completion -
end of 2011

Construction Cost:

\$10 million

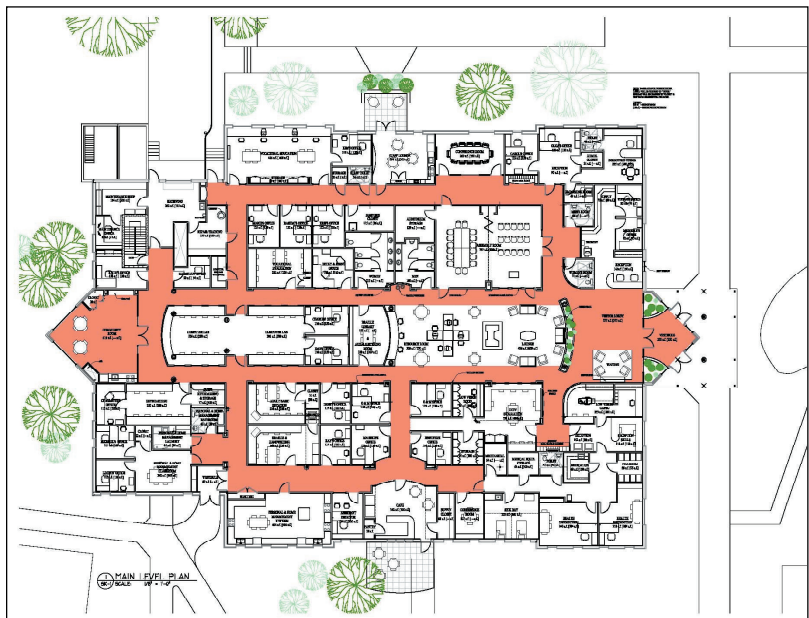
Virginia Rehabilitation Center for the Blind and Vision Impaired (VRCBVI) provides quality services to assist Virginia's citizens who are blind, deaf/blind (i.e. have combined vision and hearing losses) or vision impaired in achieving their maximum level of employment, education, and personal independence. The department provides an array of specialized services to blind Virginians of all ages to assist them in attaining the skills, confidence and positive outlook that are critical to independence.

Assessments and training to assist blind consumers in achieving their independent living goals are available, including skills for daily living, home management, orientation and mobility, Braille and other communication skills, and use of adaptive technologies. Low Vision services assist individuals with decreasing vision of all ages in utilizing their remaining vision to maximum benefit. Optical aids benefit many people with "low vision" in employment, educational pursuits, and independent living and leisure activities. Specialized assessments and technical assistance assist consumers and service providers in meeting the needs of consumers who are deaf/blind.

Winter & Company Special Needs Studio, along with Moseley Architects of Richmond, VA, worked to accomplish the project's main goal of renovating an existing building that is sensitive to students with blindness and other special needs. The building includes advance technology, direct department to department access and improves accessibility for people who are blind and vision impaired.



Existing exterior



Final floor plan

