

Rhode Island School for the Deaf New Facilities Feasibility Study

Services:

- Deaf Education Facility Programming
- Schematic Design
- Design Development
- Construction Documents
- Communication and Visual System Design
- Lighting Systems design for the Deaf
- Leadership in Energy & Environmental Design (LEED)

Client:

Rhode Island School for the Deaf
John Plante, Head of School
One Corliss Park
Providence, RI 02908
401/222-7446

Date: Fall of 2008

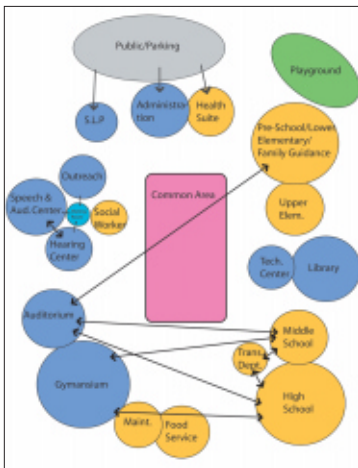
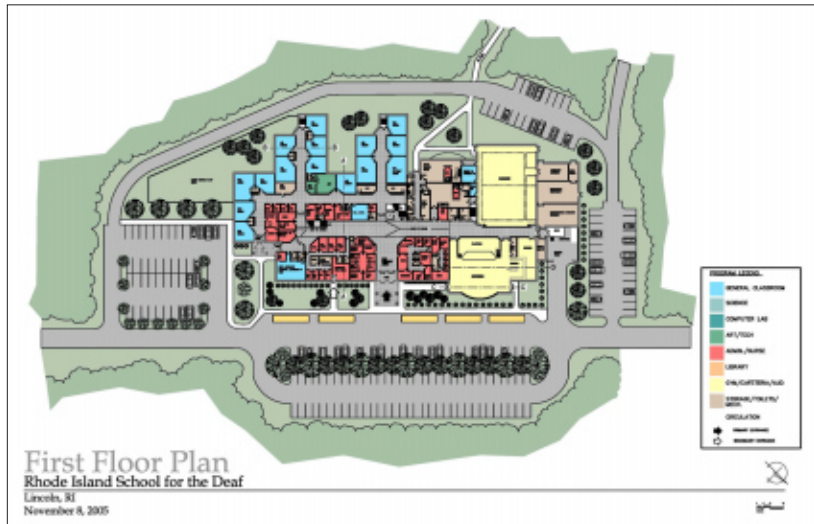
Feasibility Study Cost:
\$133,400

New Campus Cost: \$31.9 million

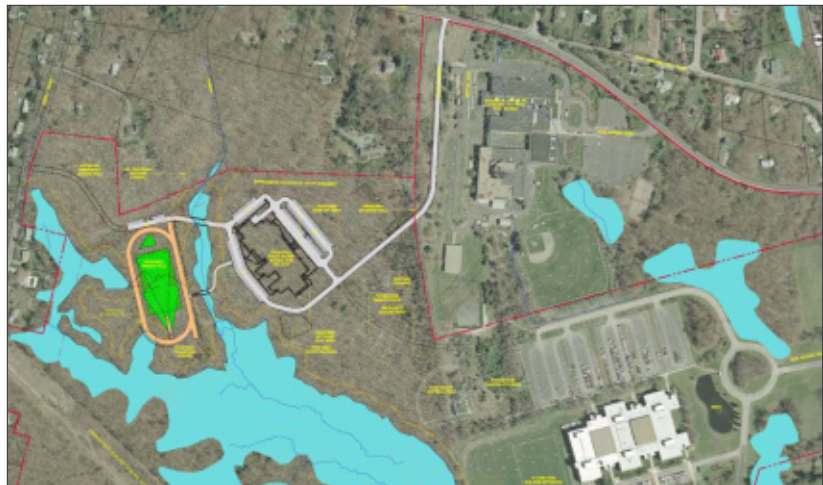
Winter & Company Special Needs Studio and Design Partnership of Cambridge were selected by the State Purchasing Office of Rhode Island to provide a new facilities feasibility study. The plan calls for all phases of design and construction on Deaf-friendly pre-school through 12th grade facilities to be built in Lincoln, Rhode Island on the campus of the Community College of Rhode Island. In addition to the educational buildings, new administration and athletic facilities as well as public use areas will be included in the 107,000 square feet project at a cost of \$31.9 million dollars.

The keystone of the project is the Campus Development Plan that focuses on Site Planning, Visual Circulation and Parking, and Campus Image and Appearance.

The project began in February of 2006. Completion is expected in the fall of 2008.



Programming feasibility diagram



Proposed facilities site plan

