
Pennsylvania School for the Deaf Early Childhood Center and Campus-wide Planning Services Philadelphia, Pennsylvania

Services:

- Deaf Facility Programming
- Deaf-Friendly Design Aspects
- Design Reviews

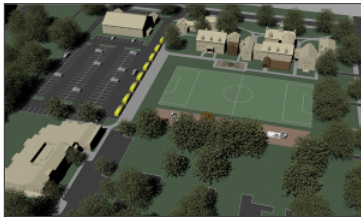
Client:

Pennsylvania School for the Deaf
Joseph Fischgrund
Headmaster
100 West School House Ln.
Philadelphia, PA 19144
215/951-4705

Date: 2003 and 2005

Construction cost: \$4.7 million

Master Plan Services: \$75,000



Proposed new campus plan (3D massing)



Stairway from Second Floor

The new 21,530 square foot Early Childhood Center at the Pennsylvania School for the Deaf houses 14 instructional classrooms, educational support rooms, parent's room, administration offices, nurses station, teachers aides room, and a multipurpose room. In addition, this new building also houses Early Intervention, Early Childhood and Hearing Children programs.

All functions are organized along straightforward corridor arrangements. Centralized offices and circulation allow excellent supervision as well as a primary information source. Daylighting is used extensively throughout the facility and is controlled by a combination "Push in and Pull out" architectural concept.

The objectives in designing this new facility were to create a functional, deaf-friendly and economical facility to encourage activity and interaction, and to promote excitement about learning.

John Dickinson of Winter & Company Special Needs Studio worked with Kelly/Maiello Architects of Philadelphia, PA on this project. Construction was completed in November of 2003.

In 2005 Winter & Company also assisted the Pennsylvania School for the Deaf with master planning services from the strategic to the specific, helping the school imagine its future.



Front Entrance of Building



Rear of Building

Winter & Company

Special Needs Studio

